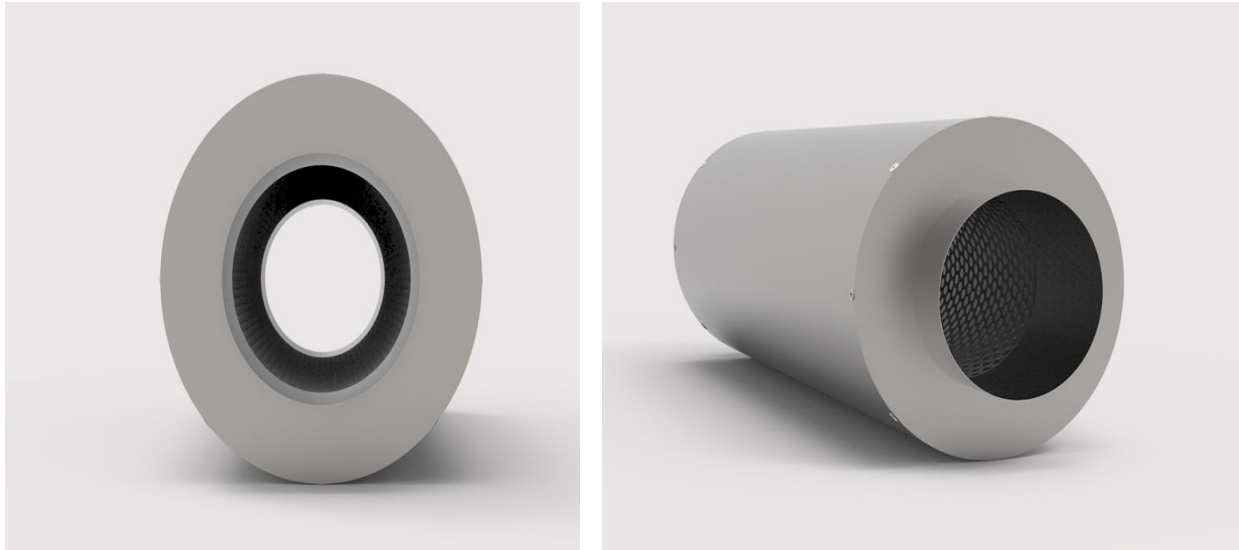


SOUND ATTENUATORS CYLINDRICAL – CKS-02



USAGE AREA AND FEATURES: It is used in ventilation systems to provide the ideal sound level at the device connections and outputs of the air ducts.

MATERIAL: 1 mm. It is produced from galvanized plate by cold rivet method without welding. The backstage is filled with rock wool of 50 kg / m³ density. The backstage surfaces are covered with glass wool covered with rock wool. Optionally, galvanized perforated plate is coated to reinforce it. Cassette thicknesses are manufactured as 100-200-300 mm.

ASSEMBLY: Bolted as standard.

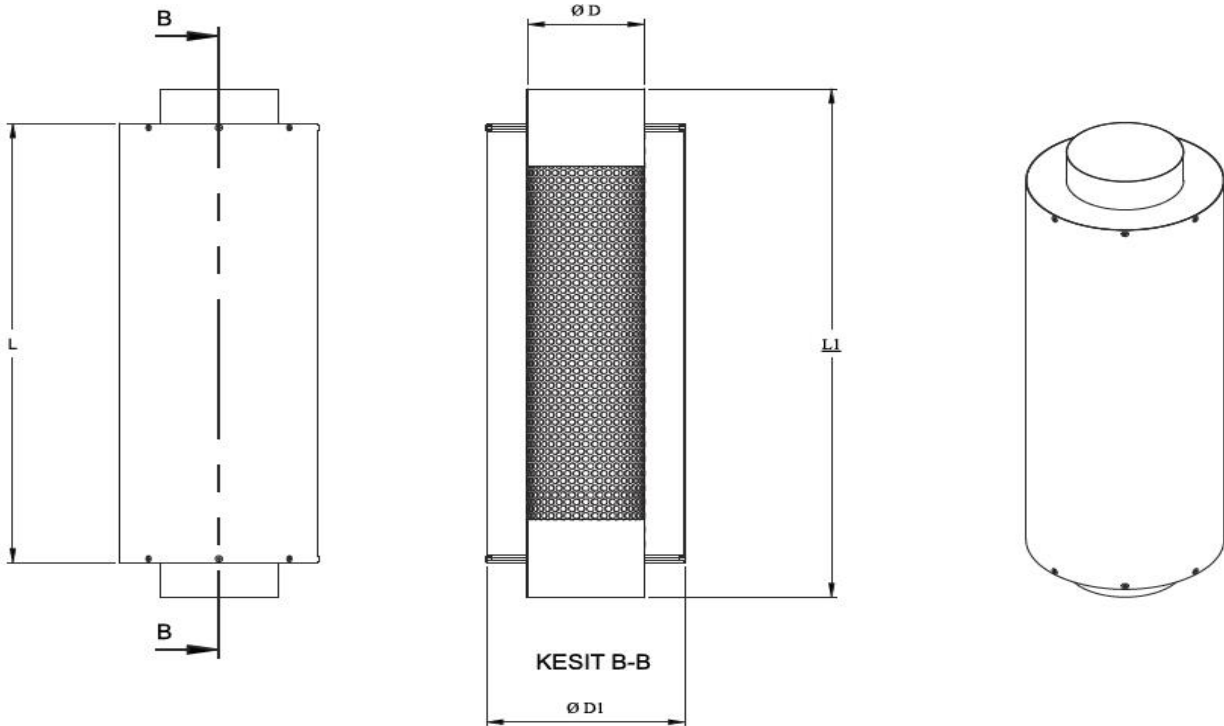
SURFACE COATING: It is manufactured from galvanized plate without paint

SOUND LEVELS AVAILABLE

		NR	dB(A)
HOSPITALS	SPECIAL ROOMS	25-35	30-40
	OPERATING ROOMS	30-40	35-45
	LABORATORIES, HOLLER	40-40	35-45
	WAITING ROOMS	35-45	40-50
OFFICES	MANAGEMENT ROOMS	20-30	25-35
	CONFERENCE ROOMS	25-35	30-40
	OPEN OFFICES	30-40	35-45
	COMPUTER ROOMS	40-60	45-65
HOTEL, RESTAURANT AND STORES	MANAGEMENT ROOMS	25-35	30-40
	CONFERENCE ROOMS	30-40	35-45
	OPEN OFFICES	30-40	35-45
	COMPUTER ROOMS	40-50	45-55
HOUSING	SINGLE FAMILY PLACES (HOLIDAY PLACE)	20-30	25-35
	SINGLE FAMILY PLACES (CITY)	25-35	30-40
	APARTMENTS	30-40	35-45
FACTORIES	LIGHT MACHINE PRODUCTION	45-65	50-70
	HEAVY MACHINE, CASTING MACHINE	55-75	60-80
LARGE BUILDINGS	RADIO AND TV STUDIOS	20-25	25-30
	CONCERT AND OPERA HALLS	20-30	25-35
	Mosques and churches	20-30	25-35
	THEATERS AND HALLS	20-30	25-35
	LIBRARIES - MUSEUMS	20-30	25-35
	SCHOOLS - CLASSES	25-35	30-40
	CINEMA AND SHOW HALLS	30-40	35-45
	VISITING HALLS	35-45	40-50
DANGEROUS LIMIT		85	90

STANDARD DIMENSIONS

PRODUCT NAME Ø	Ø D	Ø D1	L	FREKANS (Hz)	SOUND LEVEL (dB)
80-180	78	183	1200	250	22
100-200	98	203	1200	250	20
125-225	123	228	1200	250	17
150-250	148	253	1200	250	13
160-260	158	263	1200	250	13
180-280	178	283	1200	250	12
200-300	198	303	1200	250	11
250-350	248	353	1200	250	9
300-400	298	403	1200	250	9
400-500	398	503	1200	250	9



SOUND LEVEL

Abbreviations

Δp : Pressure Drop (Pa)

V: Flow rate (m³ / h)

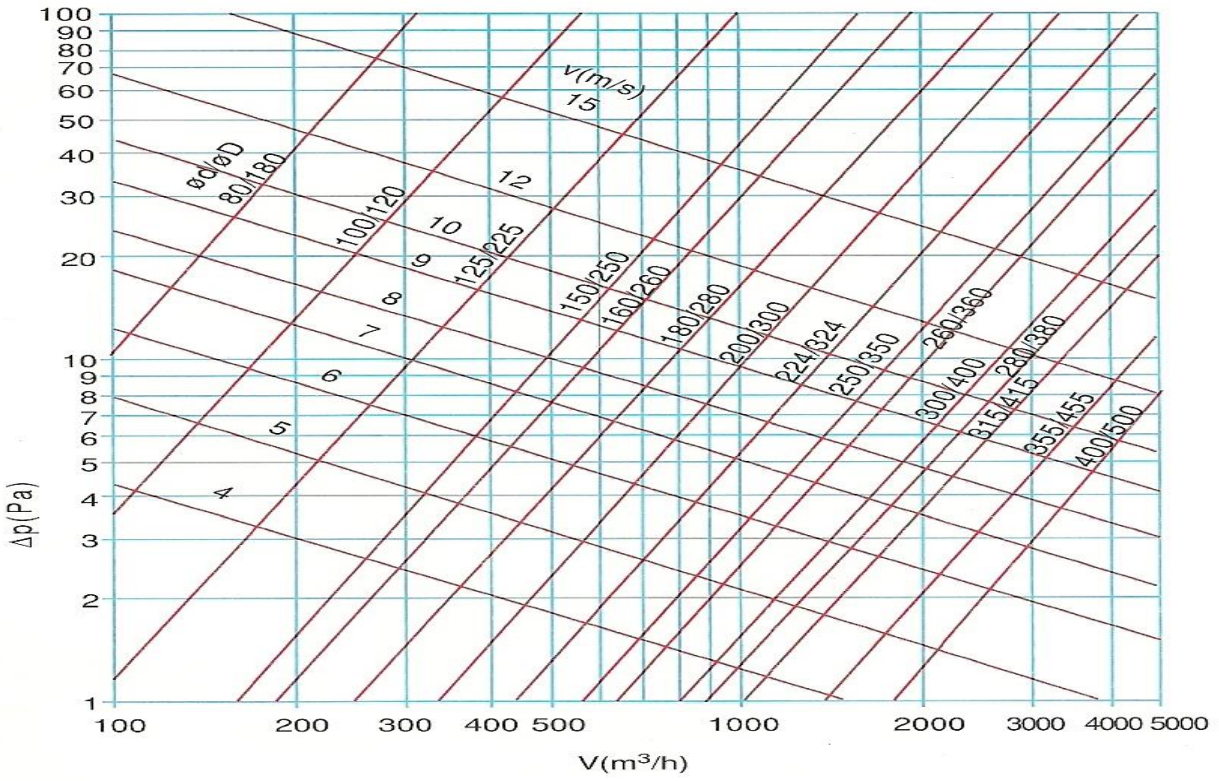
Ø D1: Muffler outer diameter (mm)

Ø D: Muffler connection neck diameter (mm.)

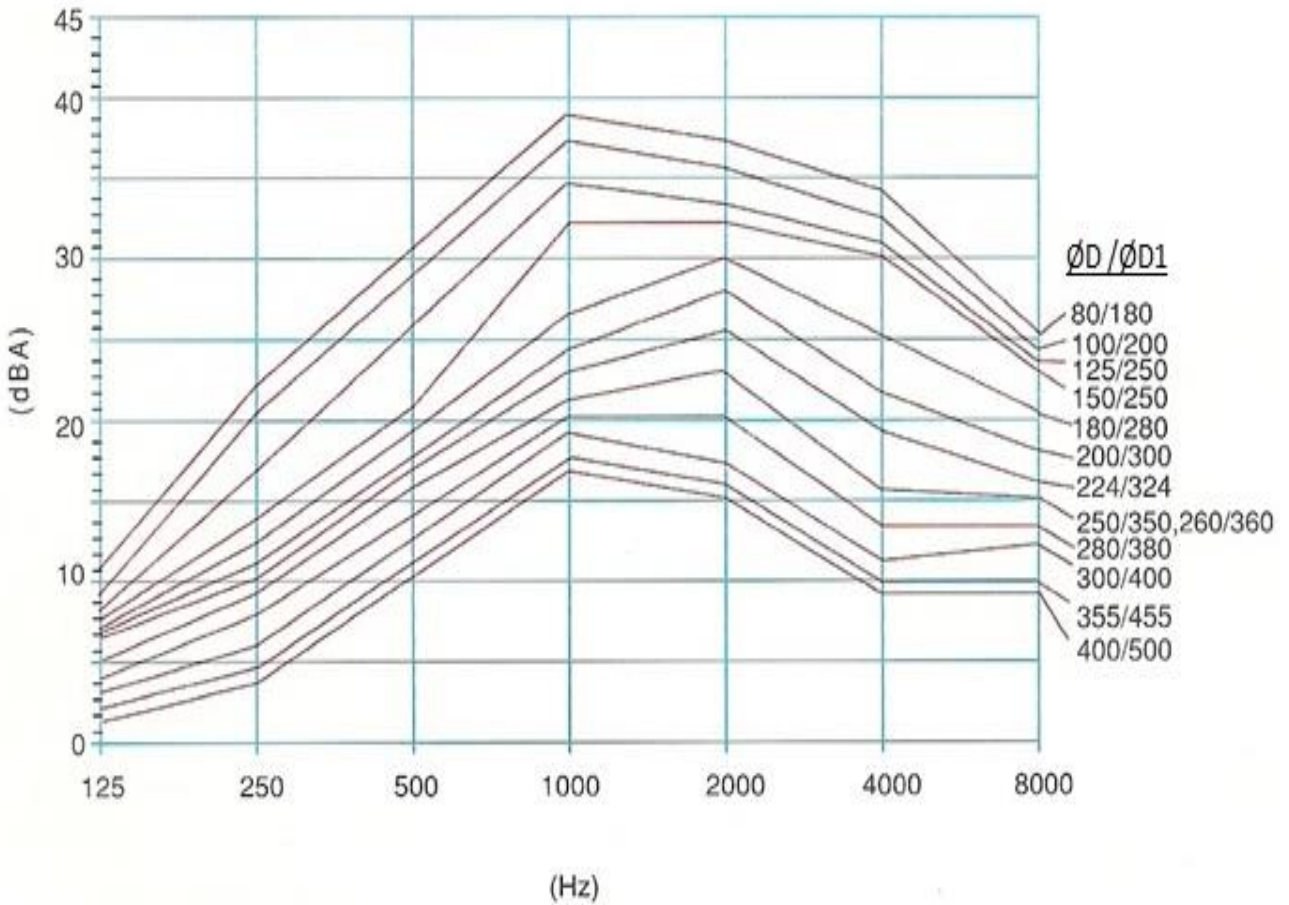
f: Frequency (Hz.)

Nc: sound level (dBA)

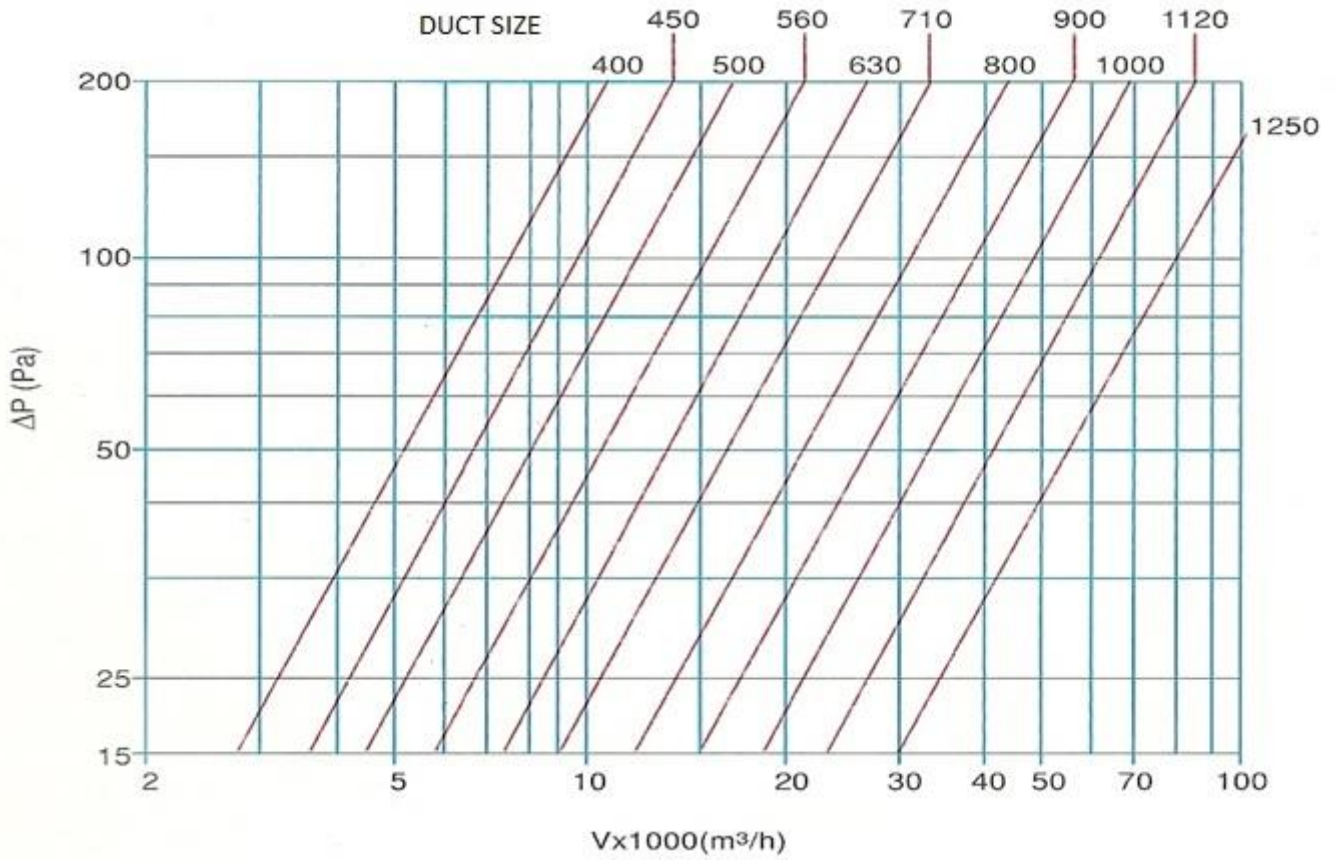
PRESSURE LOSS DIAGRAM



SOUND LEVEL DOWN DIAGRAM



PRESSURE LOSS DIAGRAM



SOUND LEVEL DOWN DIAGRAM

